

THE  
**SWINERTON**  
FOUNDATION



**2018**

**ANNUAL REPORT**



PORTLAND



TEXAS



COLORADO



CONCORD



SOUTHEAST



BAY AREA

# OUR MISSION

The Swinerton Foundation utilizes the skills of hundreds of volunteers in more than 40 communities across the United States to help build sustainable cities and neighborhoods by supporting education and development activities, workforce development programs, and community-focused non-profits that help cities thrive. The Swinerton Foundation also serves as a catalyst to encourage and expand the philanthropic endeavors of Swinerton Incorporated and its affiliates' employees.



# OUR FOCUS



## EQUITABLE EDUCATION

We support education and development activities that give individuals a greater opportunity to thrive.



## RESILIENT COMMUNITIES

We believe in supporting community-focused non-profits that help cities thrive—by making them inclusive, safe, healthy, resilient, and sustainable.



## SUSTAINABLE WORKFORCE

We support workforce development programs that provide access to and assist individuals in obtaining living-wage jobs.



# TABLE OF CONTENTS

01	LETTER FROM THE PRESIDENT	5
02	COMMUNITY BUILDING PROGRAM	6
03	ADOPT-A-SCHOOL PROGRAM	8
04	PARK SERVICE PROGRAM	10
05	FALL GIVING CHALLENGE	12
06	MOVEMBER	19
07	SWINERTON CARES	20
08	FINANCIALS	25
09	BUILDERS CLUB	26
10	BOARD OF DIRECTORS	27

# 01 LETTER FROM THE PRESIDENT

I am truly appreciative of all the generosity and support from our volunteers and donors to encourage the development and growth of the Foundation. The contributions we give back to the communities in which we work and live would not be possible without you.

In 2018, we donated over \$1.1 million to charitable organizations that are making significant impacts in their local communities. Even more impressive is that our volunteers gave over 10,000 hours of their time to support these organizations. We recognize that everyone is very busy these days, so to give of your time is a very meaningful gift.

This was the second year since we implemented the Swinerton Cares program, which allows the Foundation to match the donations of Swinerton employees and make contributions to organizations through our Dollars for Doers program. The feedback from employees has been very positive, and we have seen increased participation in the Foundations' activities.

The Foundation's focus continues to be on equitable education, resilient communities, and sustainable workforces. At the end of the day, we have a responsibility as corporate citizens to stay connected and help provide assistance and opportunity to those that are most in need.

Thank you for all your efforts in 2018! I can't wait to see what 2019 has in store...



Best,

Lori Dunn



## 02 COMMUNITY BUILDING PROGRAM

The Swinerton Foundation has always been a proud advocate of community revitalization, offering time and dedicating resources to improving homes and non-profit facilities across the country. In 2018, we donated \$62,350 to non-profits whose work ensures that communities and its members remain resilient in times of uncertainty.



## PROGRAM SPOTLIGHT

Volunteers in Southern California partnered with Rebuilding Together Long Beach (RTLB) this year to complete not one, but two projects for community members in Long Beach and Compton.

It took a lot of coordination and more than 30 hands to help, but the team successfully repaired a fence for a homeowner in Long Beach and created a 20-foot ramp with a 5-foot landing extension at a home in Compton. A tremendous effort by all, it was amazing to see so many community members come together to help those in need.

As Terri Griffith, President of RTLB, said, "We treasure our partnership with you and look forward to doing future projects with you. Your time and your talents and your treasury are making a real difference in the lives of those who need it most!"



### OUR ACCOMPLISHMENTS

More than 140 volunteers donated over 1,000 hours to complete 12 projects in the month of April.



[BACK TO TABLE OF CONTENTS](#)

## 03 ADOPT-A-SCHOOL PROGRAM

The Swinerton Foundation aims to improve vocational education in underserved schools, donating instructional hours and funds to schools across the country.





## PROGRAM SPOTLIGHT

Since fall 2017, The Swinerton Foundation, alongside volunteers, has partnered with Fremont High School's Architecture Academy as part of its Adopt-a-School Program. Students have completed assignments to provide cost estimates, a construction schedule, cut lists, and materials lists for the construction of an outdoor classroom.

The program has been a tremendous opportunity for students to not only interact with industry professionals, but to work side-by-side with them on an amazing project that will be a part of the school for years to come. All the students put in a tremendous amount of work, but three students in particular rose to the challenge—showing up to class eager to learn and lead the project team to complete the task at hand. To recognize these students for their achievements, The Swinerton Foundation presented Anai Melendrez, Breyner Hernandez, and Javier Valdes-Garcia with a Certificate of Excellence award, which included a \$300 Amazon gift card to be used to further their academic endeavors.



### OUR ACCOMPLISHMENTS

The Foundation provided over \$9,300 worth of materials for the outdoor classroom project at Fremont High School in Oakland.



[BACK TO TABLE OF CONTENTS](#)

## 04 PARK SERVICE PROGRAM

The Swinerton Foundation supports restoration and clean-up initiatives to ensure parks remain a place all community members can enjoy.



## PROGRAM SPOTLIGHTS

In August, volunteers teamed up with Surfrider Foundation to clean up Moonlight Beach in Encinitas, spending two hours scouring the beach for trash. By picking up trash on the shore, they prevented it from going out to sea and ending up in the ever-growing Great Pacific Garbage Patch. Non-biodegradable plastics and cigarette butts were the biggest culprits, but they also found some strange items—including a T.V. cord!

That same month, over 20 volunteers teamed up for a rewarding volunteer event in Irvine Ranch. Dubbed “Nurture the Nature Garden in Bommer Canyon Cattle Camp,” it is a unique trail-side feature that allows visitors to experience the natural and agricultural history of Irvine Ranch. The wonderful resource requires periodic maintenance to keep it looking its best.

The team spent three hard-working hours restoring and cleaning up the area. They pulled out invasive weeds that compete for water with native plants, mulched soil, trimmed trees, watered plants in need, and pulled stakes and tubes to give plants rooms to grow.



### DID YOU KNOW?

One tree can offset 4.3 tons of carbon.

There are more than 1.8 trillion pieces of plastic in the Great Pacific Garbage Patch.

Trails and greenways not only promote active lifestyles, they also provide opportunities for protecting plant and animal species.

[BACK TO TABLE OF CONTENTS](#)

# 05 FALL GIVING CHALLENGE WINNERS

Our Fall Giving Challenge is an annual competition that encourages individuals to give back to their local communities by collecting monetary donations, volunteering their time, and providing essential items to those in need.



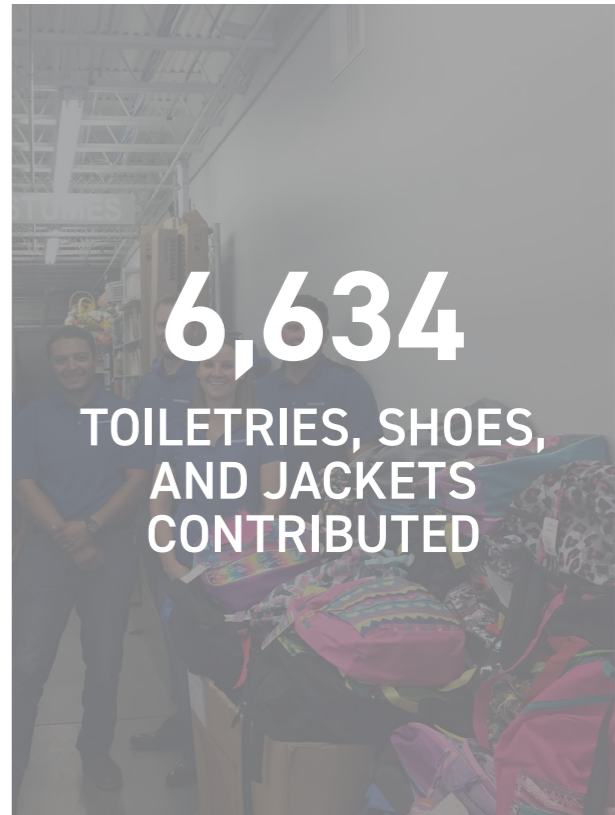
# OUR IMPACT



**\$314,740**  
DOLLARS RAISED  
225% increase



**2,044**  
HOURS VOLUNTEERED  
150% increase



**6,634**  
TOILETRIES, SHOES,  
AND JACKETS CONTRIBUTED



**\$22,663**  
WORTH OF TOYS DONATED



**79,757**  
POUNDS OF FOOD SERVED  
246% increase

## BAY AREA

In San Francisco, volunteers partnered with many organizations, including SF-Marin Food Bank, Family Dog & Puppy Rescue, and the San Francisco Fire Fighters Toy Program. A new partner organization this year, Family Dog & Puppy Rescue is a no-kill shelter and foster program which gives underdogs a second chance. Employees spent three afternoons at the shelter cleaning, organizing, and helping with fun projects, followed by snuggles, dog walks, and socialization with the animals.

Down in Silicon Valley, volunteers donated over 600 hours to local organizations, including Martha's Kitchen, Second Harvest Food Bank of Santa Clara & San Mateo Counties, Fisher House, The Health Trust, and The Salvation Army in Santa Cruz and Salinas.



FAMILY DOG & PUPPY RESCUE



SECOND HARVEST FOOD BANK



SF TOYS FOR TOTS

### COLORADO

The Denver team understands that affecting change requires a path to self-sufficiency. That is why they chose to partner with organizations that not only provide hot meals and shelter to those battling the cold, but financial literacy and nutritional classes, education, job-training, and counseling, so those who have dealt with hardship can get back on their feet. The group held food and clothing drives for Denver Children's Home, Denver Rescue Mission, and Metro Caring, and collected books for Denver Public Library Friends Foundation.



DENVER RESCUE MISSION



METRO CARING



DENVER CHILDREN'S HOME

### SEATTLE

Seattle team members supported FareStart, YouthCare YouthBuild, Renewal Food Bank, and Northwest Center. FareStart is a unique organization that provides culinary and food service job skills training to those experiencing hardship. After completing the necessary training, graduates are then placed into jobs, with more than 90% attaining employment within 90 days of completion.



RENEWAL FOOD BANK



FARESTART



ONE OF MANY DONATION LOADS GOING TO NORTHWEST CENTER



## SOUTHEAST

New to the Challenge this year were our teams in Atlanta and Charlotte. Although true freshmen in the competition, they jumped out the gate eagerly ready to give their competitors a run for their money. The team in Atlanta chose to focus all their efforts with one local organization—Sandy Springs Community Assistance Center. Employees helped the Center distribute food before Thanksgiving, sort and stock food donations at the food pantry, and purchase and prepare gifts to be donated to children in need. Volunteers in Charlotte partnered with Second Harvest Food Bank of Metrolina. The Food Bank serves 14 counties in North Carolina and five counties in South Carolina. Approximately 18% of their service area population lives in poverty, including 188,000 children and over 41,000 seniors.



SANDY SPRINGS COMMUNITY ASSISTANCE CENTER



SECOND HARVEST FOOD BANK OF METROLINA



SANDY SPRINGS COMMUNITY ASSISTANCE CENTER FOOD PANTRY

# AUSTIN

The team in Austin worked hard to achieve 100% volunteer participation for the second year in a row, partnering with Central Food Bank of Texas, Meals on Wheels Central Texas, North Texas Food Bank, Austin Pets Alive, Caritas of Austin, and United Way of Greater Austin.



FOOD BANK OF CENTRAL TEXAS



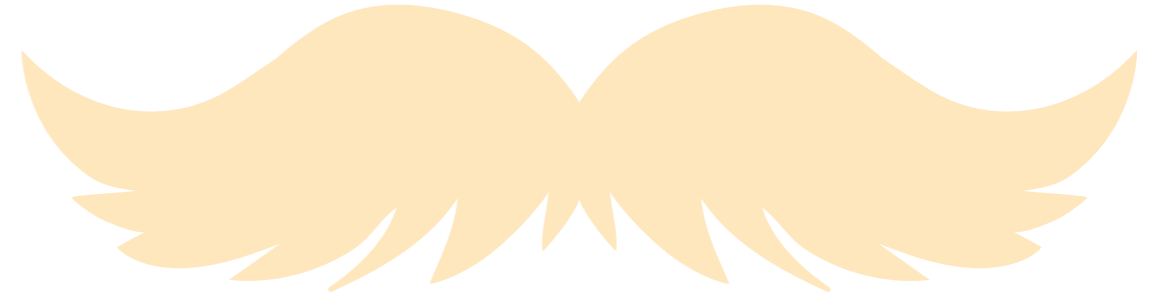
CARITAS OF AUSTIN



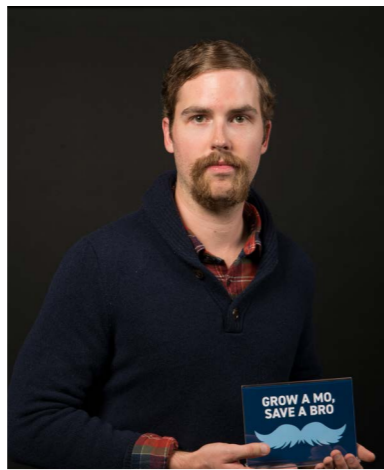
CARITAS OF AUSTIN

# 06 MOVEMBER

In November, men at Swinerton were challenged to grow out their moustaches in support of the Movember Foundation. At the end of the month, participants sent in their best 'stache selfies to be entered to win one of 12 spots in the first-ever 'Stache Calendar. 'Stache flair and creativity were highly encouraged. 2019 calendars were sold for \$20 and net proceeds were sent to the Movember Foundation.



Joseph Taulane  
San Diego, CA



Graham Worley  
Austin, TX



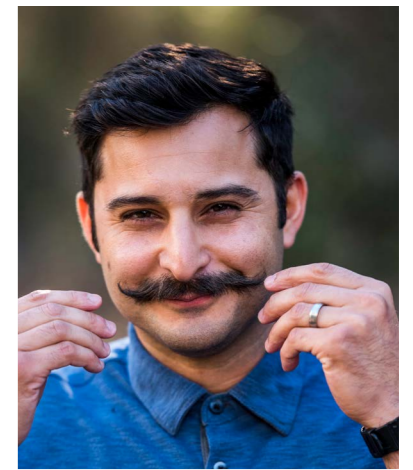
Andrew Pearl  
San Francisco, CA



Bryce Schlosser  
San Diego, CA



Jeff Goin  
Sacramento, CA



Andrew Salazar  
San Diego, CA



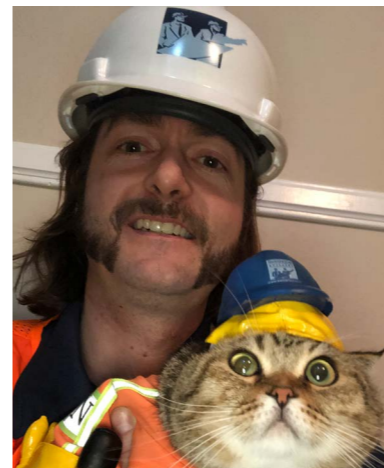
Nick Palomares  
San Diego, CA



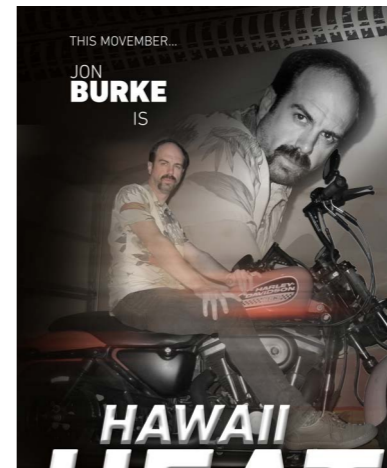
Jose Escudero  
Austin, TX



Mike Jordan  
Portland, OR



Mark Rafferty  
Irvine, CA



Jon Burke  
Honolulu, HI



Jared Tannen  
Irvine, CA

## 07 SWINERTON CARES

Swinerton Cares is a workplace giving and employee engagement program that is offered to Swinerton Incorporated and its affiliates' employees. Through Swinerton Cares, employees can take advantage of gift-matching and Dollars for Doers.



# SWINERTON CARES IN ACTION



SAINT JOHN'S PROGRAM FOR REAL CHANGE, SACRAMENTO, CA



## 2018 HIGHLIGHTS



Swinerton employees contributed **\$115,199** to charities across the nation



Volunteers donated over **10,480 HOURS** through the Dollars for Doers program



Total giving exceeded **\$316,000** with a match from The Swinerton Foundation

“One person can make a difference and everyone should try.”

–President John F. Kennedy

# SWINERTON CARES IN ACTION



HABITAT FOR HUMANITY, BEND, OR

“With the support of their company, employees gathered together for a lively and productive event to build backpacks and support their local communities.”

–Amelia Johnson, Development Officer at Family Giving Tree



“[The most rewarding part was] working together to help build a house that will help our community and a family in need.”

–Sarah Simeti, SOLV employee



FAMILY GIVING TREE, MILPITAS, CA

# SWINERTON CARES IN ACTION



LAMBERT HOUSE, PORTLAND, OR

“We enjoy volunteering at Lambert House because it allows us to partner with passionate staff members who are dedicated to helping others, while providing social interaction and mental stimulation to a population that often gets overlooked.”

–Mike Forys, Swinerton employee

“We wish to extend to you our sincerest MAHALO for all of the help you provided with our 2018 Honolulu area Angel Tree campaign. Each one of you made such an important contribution and we hope you know how much we appreciated your valuable donation of time. THANK YOU SO MUCH!”

–Amy Takemoto, The Salvation Army



THE SALVATION ARMY, HONOLULU, HI

## SWINERTON CARES IN ACTION



SPECIAL OLYMPICS, FREMONT, CA

“At my first practice, I recognized one of the athletes, Mark Dotterer, as someone that I went to high school with. Mark was well received by his peers and was very popular at Irvington High School. Though Mark was a couple of grades ahead of me, he remembered me. Mark immediately started to introduce me to his teammates as his friend, which helped me feel at ease. I had the privilege of coaching Mark for almost 14 years before his passing.”

– Cathy Lachenmyer,  
Outstanding Volunteer Winner  
and Swinerton employee



## 08 FINANCIALS

Summary of The Swinerton Foundation's 2018 Consolidated Financial Statements for the year ending December 31, 2018.

### OPERATING REVENUE

Consolidated operating revenues totaled \$1.67 million in 2018.

Of this revenue, \$446,327 came from various fundraising activities, including \$19,976 for the Tony Williamson Building Better Futures Scholarship.

### EXPENSES

Consolidated operating expenses in 2018 were \$1,185,265. Of this amount, \$1,139,244 was distributed in the form of contributions and grants.

At year's end, our balance sheet reflected total assets of more than \$3.3 million, including \$2.4 million in investments, ensuring we are able to support our initiatives even in lean times.



# 09 BUILDERS CLUB

2018 donors who contributed \$5,000 or more

ACCO Engineered Systems

A.J. Kirkwood & Associates

Anderson Howard

Aragon Construction

Baker Electric

Bali Construction

Bay City Mechanical

Ben's Asphalt

Bergelectric

Best Contracting Services

Bigge Crane & Rigging Co.

Borbon Inc.

BrightView Landscape  
Development

Caston

Contra Costa Electric

Corgan

CSI Electrical Contractors

Cupertino Electric

Environmental Construction  
Group

Gallagher

Giroux Glass

Gregg Miller

Griffith Company

Holliday Rock

Imperial Specialty Contracting

Indoor Environmental Services

J&M Concrete Contractors

Jacobsson Engineering  
Construction

JT Wimsatt

Key Air Conditioning

KHS&S Contractors

Koury Engineering & Testing

Land Mark Electric

Largo Concrete

Letner Roofing Company

Limbach Company

Liberty Mutual

Martin Bros.

Matrix Environmental

MB Coatings

McGuire & Hester

Miller Environmental

Mitsubishi Electric US

Morrow-Meadows Corporation

Pacific Rim Mechanical

Pacific Structures

Raymond Group

Real Wood Floors

Rebar Engineering

RJ Performance

Rutherford Co.

SAK and Associates

SASCO

Scaffold Solutions

Schindler Elevator Corporation

Shaw & Sons

Sheldon Mechanical  
Corporation

Silverado Contractors

Silverado Tile & Stone

Swinerton

The Stahl Companies

Tyco

Viking Steel

Washington Iron Works

Webcor

West Coast Fire Stopping

Westside Building Material

Wiedenbach

Zurich

# 10 BOARD OF DIRECTORS



**Lori Dunn**  
President



**Rachael Guerrero**  
Secretary



**Brad Peterson**  
Treasurer



**George Ehara**



**Frank Foellmer**



**Eric Foster**



**Meggie Hollywood**



**Charles "Rick" Moore**



**SheriAnn Murphy**



**Mark Payne**



**Lia Tatevosian**



**Myrna Wagner**



**David White**



**David Worley**

THE  
SWINERTON  
FOUNDATION



260 Townsend Street, 5th floor  
San Francisco, CA 94107

[theswinertonfoundation.org](http://theswinertonfoundation.org)